

Test Report

No.: GZHL1704014359SD

Date: Apr 26, 2017

Page 1 of 5

EASTERNDEER HARDWARE & PLASTICS (CHINA) CO.,LTD.
C/6, NAN PING ROAD, INDUSTRIAL DISTRICT, XIAO LAN TOWN, ZHONG SHAN CITY, GUANG DONG PROVINCE, CHINA.

The following sample(s) was/were submitted and identified on behalf of the client as:

Sample Description : SHELVING UNIT 6SHELF 2090X1500X540MM BLACK
SGS Ref No. : SDHL1704006994FT
Style / Item No. : GOS009
Buyer : PINNACLE DIVERSITY PTY LTD
Manufacturer : EASTERNDEER HARDWARE & PLASTICS (CHINA) CO.,LTD.
Country of Origin : CHINA
Sample Receiving Date : Apr 19, 2017
Test Performing Date : Apr 19, 2017 to Apr 26, 2017

Test Result Summary

Test(s) Requested	Result(s)
Distributed loading test	PASS
Summary:	
1. For further details, please refer to the following page(s).	

Signed for and on behalf of
Guangzhou Branch,
SGS-CSTC Ltd.



Arthur Mak
Approved Signatory



SGS-CSTC Inspection & Testing Services Co., Ltd.
Guangzhou Branch Testing Center Headlines

Unless otherwise agreed in writing, this document is issued by the Company subject to its General Conditions of Service printed overleaf, available on request or accessible at <http://www.sgs.com/en/Terms-and-Conditions.aspx> and, for electronic format documents, subject to Terms and Conditions for Electronic Documents at <http://www.sgs.com/en/Terms-and-Conditions/Terms-e-Document.aspx>. Attention is drawn to the limitation of liability, indemnification and jurisdiction issues defined therein. Any holder of this document is advised that information contained hereon reflects the Company's findings at the time of its intervention only and within the limits of Client's instructions, if any. The Company's sole responsibility is to its Client and this document does not exonerate parties to a transaction from exercising all their rights and obligations under the transaction documents. This document cannot be reproduced except in full, without prior written approval of the Company. Any unauthorized alteration, forgery or falsification of the content or appearance of this document is unlawful and offenders may be prosecuted to the fullest extent of the law. Unless otherwise stated the results shown in this test report refer only to the sample(s) tested and such sample(s) are retained for 30 days only.

Attention: To check the authenticity of testing / inspection report & certificate, please contact us at telephone: (86-755) 8307 1443, or email: CN.Doccheck@sgs.com

198 Kezhu Road, Science Park Guangzhou Economic & Technology Development District, Guangzhou, China 510663 t (86-20) 82155555 f (86-20) 82075191 www.sgsgroup.com.cn
中国·广州·经济技术开发区科学城科珠路198号 邮编: 510663 t (86-20) 82155555 f (86-20) 82075191 e sgs.china@sgs.com

TESTS AND RESULTS
Test Conducted:

Distributed loading test according to client's requirement.

No. of Sample:

1 piece (Sample 1). For more sample information and pictures, please refer to the following page.

Test and Requirements	Test Results
Distributed Loading Test Distributed loading each shelf for 180KG and immediately record the largest deflection (D1) for each shelf. Then maintain the loading for 48 hours, record the largest deflection (D2) at millimeter for each shelf and then release the loading. After release loading for 2 hour and record the largest deflection (D3) at millimeter for each shelf. The D3 should not exceed 5% deflection. During and after the test, the sample should have no damage, defection, cracking or turnover. Give the result of pass/fail.	<p>PASS</p> <p>See annex table for more details.</p>

Remark : This test was subcontracted to SGS other qualified subcontractor.

Annex Table:

Shelf (From down to up)	Deflection 1 (mm)	D1	Deflection 1 (mm)	D2	Deflection 1 (mm)	D3	Result
#1	16.02	1.07%	23.08	1.54%	2.33	0.16%	PASS
#2	17.35	1.16%	24.15	1.61%	3.74	0.25%	PASS
#3	19.22	1.28%	26.12	1.74%	5.69	0.38%	PASS
#4	21.15	1.41%	29.88	1.99%	6.57	0.44%	PASS
#5	22.89	1.53%	32.20	2.15%	8.23	0.55%	PASS
#6	25.10	1.67%	34.76	2.32%	9.14	0.61%	PASS

Remark:

- Deflection 1: The maximum deflection when just loaded with 180 kg for each shelf;
Deflection 2: The maximum deflection when loaded after 48 hours;
Deflection 3: The maximum deflection when 2 hours after removed the load;
- For the sample information and pictures, please refer to the following page.



Unless otherwise agreed in writing, this document is issued by the Company subject to its General Conditions of Service printed overleaf, available on request or accessible at <http://www.sgs.com/en/Terms-and-Conditions.aspx> and, for electronic format documents, subject to Terms and Conditions for Electronic Documents at <http://www.sgs.com/en/Terms-and-Conditions/Terms-e-Documents.aspx>. Attention is drawn to the limitation of liability, indemnification and jurisdiction issues defined therein. Any holder of this document is advised that information contained hereon reflects the Company's findings at the time of its intervention only and within the limits of Client's instructions, if any. The Company's sole responsibility is to its Client and this document does not exonerate parties to a transaction from exercising all their rights and obligations under the transaction documents. This document cannot be reproduced except in full, without prior written approval of the Company. Any unauthorized alteration, forgery or falsification of the content or appearance of this document is unlawful and offenders may be prosecuted to the fullest extent of the law. Unless otherwise stated the results shown in this test report refer only to the sample(s) tested and such sample(s) are retained for 30 days only.

Attention: To check the authenticity of testing / inspection report & certificate, please contact us at telephone: (86-755) 8307 1443, or email: CN.Doccheck@sgs.com

SGS-CSTC Inspection & Testing Services Co., Ltd.
Guangzhou Branch Testing Center Headlines

198 Kezhu Road, Science Park Guangzhou Economic & Technology Development District, Guangzhou, China 510663 t (86-20) 82155555 f (86-20) 82075191 www.sgsgroup.com.cn
中国·广州·经济技术开发区科学城科珠路198号 邮编: 510663 t (86-20) 82155555 f (86-20) 82075191 e sgs.china@sgs.com

SAMPLE INFORMATION AND PICTURES

Weight: 47.70 kg

Overall Dimensions: 1500 mm W x 535 mm D x 2093 mm H

Other Dimensions: /

Sample as Received



Unless otherwise agreed in writing, this document is issued by the Company subject to its General Conditions of Service printed overleaf, available on request or accessible at <http://www.sgs.com/en/Terms-and-Conditions.aspx> and, for electronic format documents, subject to Terms and Conditions for Electronic Documents at <http://www.sgs.com/en/Terms-and-Conditions/Terms-e-Documents.aspx>. Attention is drawn to the limitation of liability, indemnification and jurisdiction issues defined therein. Any holder of this document is advised that information contained hereon reflects the Company's findings at the time of its intervention only and within the limits of Client's instructions, if any. The Company's sole responsibility is to its Client and this document does not exonerate parties to a transaction from exercising all their rights and obligations under the transaction documents. This document cannot be reproduced except in full, without prior written approval of the Company. Any unauthorized alteration, forgery or falsification of the content or appearance of this document is unlawful and offenders may be prosecuted to the fullest extent of the law. Unless otherwise stated the results shown in this test report refer only to the sample(s) tested and such sample(s) are retained for 30 days only.

Attention: To check the authenticity of testing / inspection report & certificate, please contact us at telephone: (86-755) 8307 1443, or email: CN.Doccheck@sgs.com

SGS-CSTC 检测技术有限公司 广州分公司
Guangzhou Branch Testing Center

198 Kezhu Road, Science Park Guangzhou Economic & Technology Development District, Guangzhou, China 510663 t (86-20) 82155555 f (86-20) 82075191 www.sgsgroup.com.cn
中国·广州·经济技术开发区科学城科珠路198号 邮编: 510663 t (86-20) 82155555 f (86-20) 82075191 e sgs.china@sgs.com

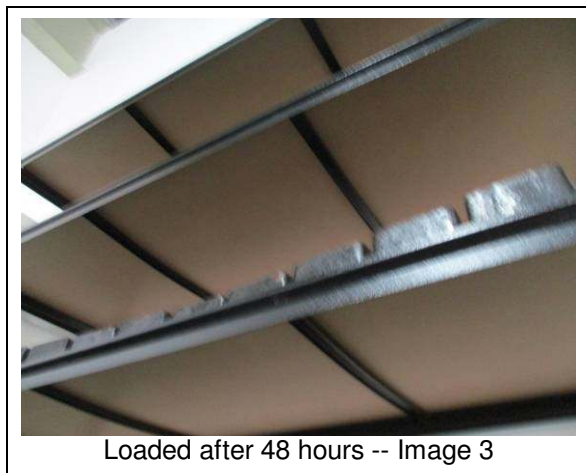
Pictures with Details



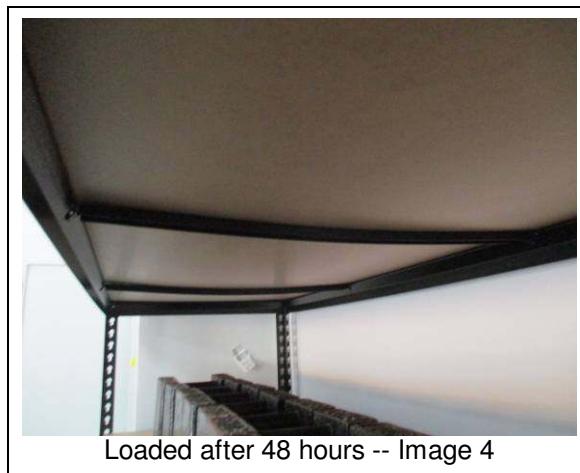
Before loading -- Image 1



Loaded after 48 hours -- Image 2



Loaded after 48 hours -- Image 3



Loaded after 48 hours -- Image 4





End of Report



Unless otherwise agreed in writing, this document is issued by the Company subject to its General Conditions of Service printed overleaf, available on request or accessible at <http://www.sgs.com/en/Terms-and-Conditions.aspx> and, for electronic format documents, subject to Terms and Conditions for Electronic Documents at <http://www.sgs.com/en/Terms-and-Conditions/Terms-e-Document.aspx>. Attention is drawn to the limitation of liability, indemnification and jurisdiction issues defined therein. Any holder of this document is advised that information contained hereon reflects the Company's findings at the time of its intervention only and within the limits of Client's instructions, if any. The Company's sole responsibility is to its Client and this document does not exonerate parties to a transaction from exercising all their rights and obligations under the transaction documents. This document cannot be reproduced except in full, without prior written approval of the Company. Any unauthorized alteration, forgery or falsification of the content or appearance of this document is unlawful and offenders may be prosecuted to the fullest extent of the law. Unless otherwise stated the results shown in this test report refer only to the sample(s) tested and such sample(s) are retained for 30 days only.

Attention: To check the authenticity of testing / inspection report & certificate, please contact us at telephone: (86-755) 8307 1443, or email: CN.Doccheck@sgs.com

198 Kezhu Road, Science Park Guangzhou Economic & Technology Development District, Guangzhou, China 510663 t (86-20) 82155555 f (86-20) 82075191 www.sgsgroup.com.cn
中国·广州·经济技术开发区科学城科珠路198号 邮编: 510663 t (86-20) 82155555 f (86-20) 82075191 e sgs.china@sgs.com